

Tidworth Area Board Police Report September 2017

1. East Community Policing Team

Sector Head: Inspector Nick Mawson

Sector Deputy: Sergeant James Williams

Community Coordinator: Pc Lucy Wileman

Tidworth PCSO: PCSO Maria Downham & PCSO Natalie Cleife

An update from Helen KENNEDY Head of Media Services:

Many areas boards are raising the issue that our 101 Call handling for Wiltshire remains below the standards we wish to deliver.

To give context to the current position it is important to understand that there has been a significant shift in the way we manage our demand within the Police Service.

The Community Policing Model recognises that the Police service is being asked to do 'more with less' and helps to address this fact by assessing the demand at the first point of contact. The call handler will assess the threat, harm and risk without necessarily tasking an officer to attend in the first instance. The adage they work to in our Communication Centre is to get it right first time.

As a result of this change in handling we have seen an increase in waiting times for calls to be answered.

However, since we initiated the CPT Model, calls for immediate help have seen an improvement.

It is also important to note that we have engaged in a significant recruitment phase for many roles within the CPT. Police Officers, PCSO, Local Crime Investigators and Prisoner Transport Team members have all been recruited. Where do we find people with the right skills to do these roles? One area is our Communication Centre. These are members of Police Staff who have been trained in aspects of law and have good communication skills. It is not surprising that they then wish to use their training and continue to develop. Consequently recruitment and retention of staff is a challenge, however to reassure you our Communication Centre Leadership team have a well-established rolling recruitment programme in place.

We continue to review and assess where improvements are needed. We are currently exploring solutions including on-line reporting of crime, a more informative website and on-line chat and hope this different access channels will start to be available late summer 2017. We will not solve this issue overnight and are working hard any problems to deliver the best possible service to those who contact us.

Thank you

Please follow us on:

Twitter <https://twitter.com/wiltshirepolice>

Facebook <https://www.facebook.com/wiltshirepolice/>

Or sign up to Community Messaging <https://www.wiltsmessaging.co.uk/> Our free Community Messaging service will also help keep you updated about policing and crime in your local area.



2. CPT - Current Priorities & Consultation Opportunities:

Current Priorities Tidworth and surrounding areas.

Off Road Motorbikes/Vehicles Salisbury Plain

This priority commenced on 24th March, to date 111 actions/patrols have taken place. Officers continue to patrol the area along with members of our Volunteer Scheme. The rural crime team are actively involved. Further operations are being planned with the MOD, Special Constabulary and RMP.

Summer Crime Prevention Campaign

This priority has been running since 13th July. Back in July Asian Gold Crime prevention advice was circulated around the Military. RMP also assisted with this process. They circulated the information amongst the wives' meetings, RMP Police Station and community centres. On 26th July & 16th August Pc Wileman attended BFBS and carried out a radio interview covering all aspects of local issues and offering lots of crime prevention advice for everyone. At the beginning of August newly designed Cyber Crime leaflets were distributed to all our local contacts. Due to Burglaries in Choulston Close, Netheravon a leaflet drop took place to all residents on 27th July 2017.

Corporate Communications at Police Headquarters have designed new posters covering all aspects of crime prevention, these are about to be circulated by the local pcso's.

Anti Social behaviour - Recreation Ground and Jubilee Gardens

This priority commenced on 27th June. In total 80 actions/patrols have taken place. It is unfortunate to note that incidents of Criminal Damage and littering are still taking place. The priority will continue until the issues have ceased. This will be reviewed at the next Neighbourhood tasking meeting.

Target Patrols Tidworth and surrounding areas

Chrystal Palace Farm - Now closed

Between the 7th June and the 10th July, the farm had 6 Burglaries. Additional patrols were set up to offer reassurance and deter further incidents. Patrols commenced on 28th July, in total 31 patrols took place and the incidents have now stopped. The patrol has now been closed as of 5th September.

Mughal Restaurant - New

Problems have returned to this location and therefore a target patrol has been set up starting from 28th August. To date 18 patrols have taken place.

Neighbourhood Tasking Meeting

The next meeting is due to take place on 26th September at 19.00 hours at the Community Centre, Wyle Road.

Media

Maria has agreed to do a regular slot on Castledown Radio with Brian Pratt and Marc Read. PC Wileman is doing the same with BFBS in Bulford.

Drugs

4 drugs warrants were executed in August, two took place in Tidworth and the others in Ludgershall. The teams continue to develop further warrants, we welcome any intelligence from members of the community to assist with this.

Consultations

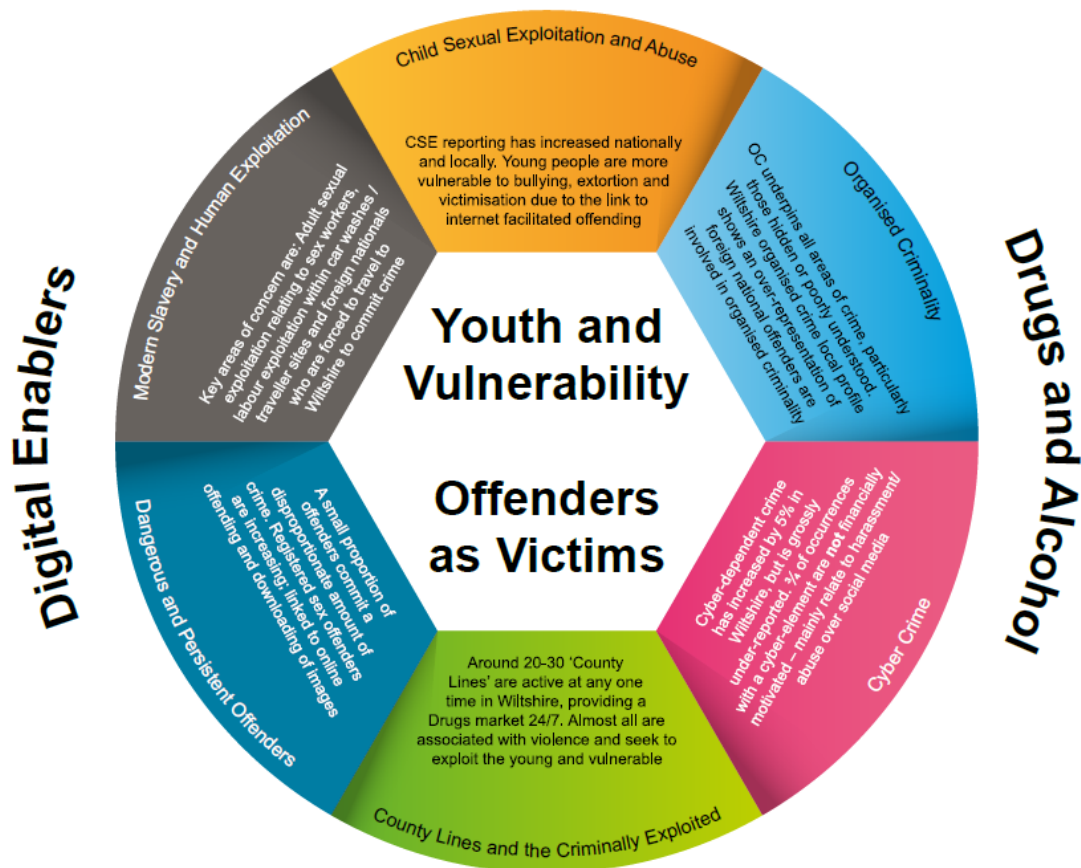
You PCSO's are carrying out consultations on their areas.

Update re Rural Crime Partnership

Rural crime operations continue, in our efforts to target what is often cross border organised criminal activity. Of one particular individual who has been actively involved in hare coursing and trespass on farmland a Community Protection Warning notice has been issued, in addition to seeking out prosecution for the offence itself. We are eager to utilise this legislation for persistent and impactful rural crime incidents.

3. Wiltshire Police Control strategy

Below is our Control Strategy for your reference. This focuses on how we conduct our operational policing based on the Police and Crime Plan. We will continue to align our resources with the threat/harm/risks presented in line with the control strategy.



Child sexual exploitation and abuse

Young people often enter the criminal justice system as a direct result of being exploited by others for financial or sexual gain. This has been recognised recently with a shift in focus to these young people being dealt with as Criminally Exploited and Vulnerable (CEV) individuals. Where circumstances dictate, this will mean that the safeguarding of these young people will take precedence over any criminal offences they may have committed. Those doing the exploiting are the individuals that should be targeted.

Please be vigilant for young people who may be being exploited in this way and report to Police through the normal channels.

Organised criminality

Operation Sirius is a dedicated team investigating Asian Gold burglaries, one of which recently occurred within this area. Our local officers have also been engaging with businesses in the town requesting they report anything or anyone acting suspiciously in their neighbourhood, unknown or unexpected doorstep traders, unusual vehicles, many offenders use high performance vehicles. Please be mindful if you see such a vehicle driving around your area. We work closely with forces nationally, sharing information, helping to tackle this criminality which occurs throughout the country.

Cybercrime

Our Cyber Crime Prevention Officer is working closely with our partners within the region including attending Area Boards.

Many of the cyber scams which succeed occur following an individuals response to act quickly to an instruction or use distraction techniques so that less concentration occurs on the task in hand.

Please see the attached Get Safe Online leaflet.

County Lines and the Criminality Exploited

Patrol strategies are utilised for those individuals and premises identified as being at risk from organised criminality

Dangerous and Persistent offenders

See below update regarding the Wells' brothers.

Two brothers from the south Wiltshire area have recently been convicted of a number of these types of offences, committed within Wiltshire and Dorset:

Edward and Lenny Wells stole handbags, wallets, purses, sat-navs, mobile phones and other items worth up to £20,000 over three months from November 2016. Both men were on license from prison for similar offences at the time.

Jailing them for 44 months each for conspiracy to steal from motor vehicles, Judge Susan Evans QC said: "When you target handbags and wallets people lose items of substantial value which leads to high level of inconvenience."

Prosecuting at Salisbury Crown Court on Thursday, Edward Elton said 104 cars had been broken into.

Both men pleaded guilty and accepted responsibility for most, but not all of the 104 offences.

The court heard they targeted isolated, rural car parks, breaking into vehicles and taking items including 44 handbags and 13 purses and wallets.

On other occasions cash, jewellery, and even dog food was stolen.

Modern Slavery and Human Exploitation

Earlier this year our Public Protection Team established a Wiltshire Adult Sexual Exploitation Panel to allow for regular meetings of officers from each policing team and our partners, to share information and implement interventions to reduce risk of those vulnerable individuals identified as being at risk of sexual exploitation.

Domestic Abuse

A third of DA perpetrators are repeat offenders. A quarter of offenders have also been the victim of DA.

Nick Mawson
Sector Inspector,
Wiltshire East CPT